



FESTIVAL OF MUSIC ORCHESTRA

AUDITION REQUIREMENTS

Audition Information

- Auditions will take approximately 10 minutes
- No accompaniment is required
- The audition panel will consist of the Orchestra Manager and a member of the Orchestra Team

Requirements for All Instruments

1. Set Excerpts

- Available from **17 October** at www.festivalofmusic.org.au/students/orchestra.
- Students must prepare all three excerpts for the audition
- Each excerpt highlights different musical concepts—ensure accuracy in notes, rhythm, articulation, and expression

2. Own Choice Piece

- Prepare one additional piece of your choice
- This should be something you **enjoy playing**, that **demonstrates your skills**, and that you can **perform with confidence**
- Provide a copy of the music to the audition panel on arrival (returned after the audition)

3. Instrument Ranges

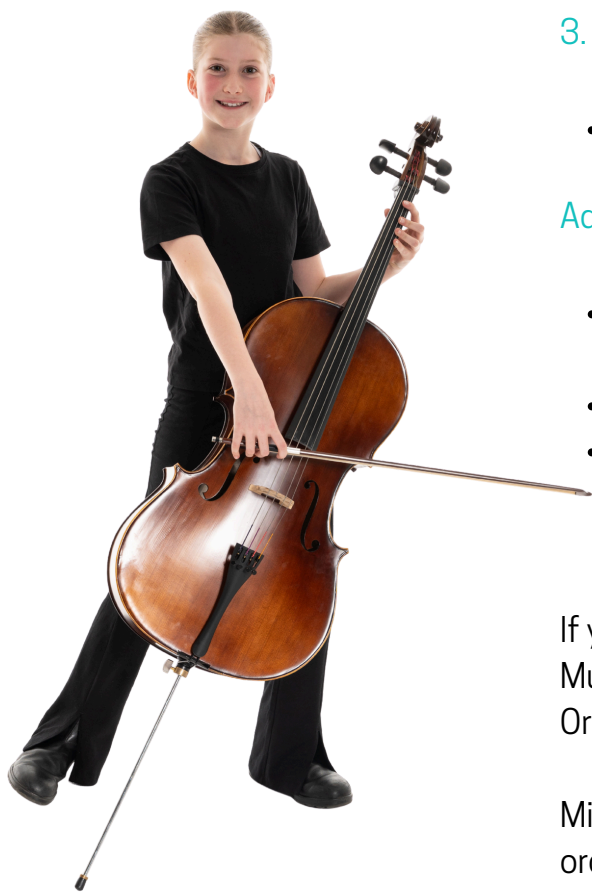
- See the attached sheet for required ranges

Additional Notes

- **Electric Guitar/Bass:** bring your own instrument and lead. Amplifiers provided.
- **Keyboard (Piano):** a standard piano will be available
- **Percussion:** students are expected to play the full range of percussion and drum kit repertoire. A drum kit and all percussion equipment will be provided.

If you have questions, please speak with your Instrumental Music Teacher, Classroom Music Teacher, or contact the Orchestra Manager:

Michael McConnochie
orchestra.psmf786@schools.sa.edu.au





FESTIVAL OF MUSIC ORCHESTRA

INSTRUMENT & MUSIC INFORMATION

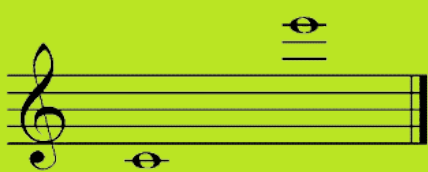
General Information

- An audition time **must be booked** in advance.
- Music is generally written within the ranges listed below and may include a variety of rhythms.
- Syncopated passages are common in the repertoire.
- Music will include accidentals and a variety of key signatures.
- For information about instruments not listed, please contact the Orchestra Manager.

MINIMUM RANGES

Woodwind Instruments

FLUTE



CLARINET



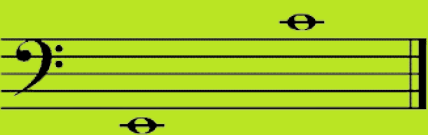
ALTO & TENOR SAX



OBOE



BASSOON





FESTIVAL OF MUSIC ORCHESTRA

INSTRUMENT & MUSIC INFORMATION

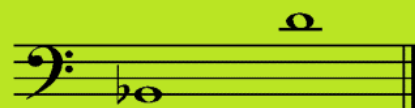
MINIMUM RANGES

Brass Instruments

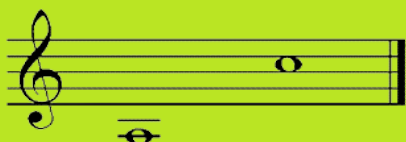
TRUMPET



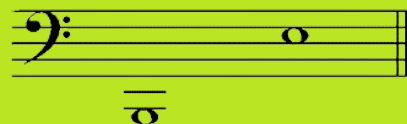
TROMBONE



FRENCH
HORN

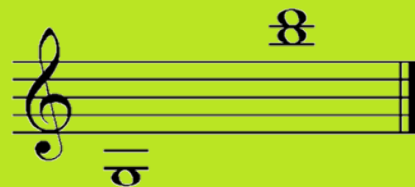


TUBA



String Instruments

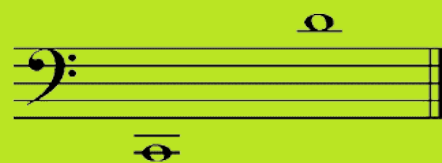
VIOLIN



VIOLA



CELLO



DOUBLE
BASS





FESTIVAL OF MUSIC ORCHESTRA

INSTRUMENT & MUSIC INFORMATION

General String Requirements

- Able to play in a variety of sharp and flat key signatures
- Fluent bowing, strong tone and accurate intonation in 1st position
- Up to 3rd position playing for violins
- Vibrato playing would be advantageous for violin students
- 4th position playing would be advantageous for cello students

Rhythm Section Requirements

Electric Guitar

- Able to play written melodies (notation/tablature)
- Able to play open and bar chords

Electric Bass

- Able to play written melodies (notation/ tablature)
- Able to play octave quavers

Keyboard

- Approximately Grade 3 AMEB playing standard
- Playing simple melodic lines as well as chord patterns

Percussion

- Able to demonstrate basic rock, shuffle/swing, Latin style rhythms on drum kit
- Able to demonstrate a basic fill on drum kit
- Able to demonstrate basic rolls on drum kit
- Reading written notation for kit as well as auxiliary percussion
- Willingness to learn a variety of percussion instruments in addition to drum kit
 - This includes Melodic Percussion (xylophone, glockenspiel, timpani) and requires a knowledge of reading treble clef

